

知事直轄組織
Governor's Policy Department

総務課
Administrative Division

知事戦略局

Governor's Strategic Bureau

秘書課

Secretarial Division

知事戦略課

Governor's Strategic Division

広聴広報課

Public Relations Division

政策推進局

Policy Promotion Bureau

総合政策課

General Policy Division

財政課

Finance Division

地域外交局

Regional Diplomacy Bureau

地域外交課

Regional Diplomacy Division

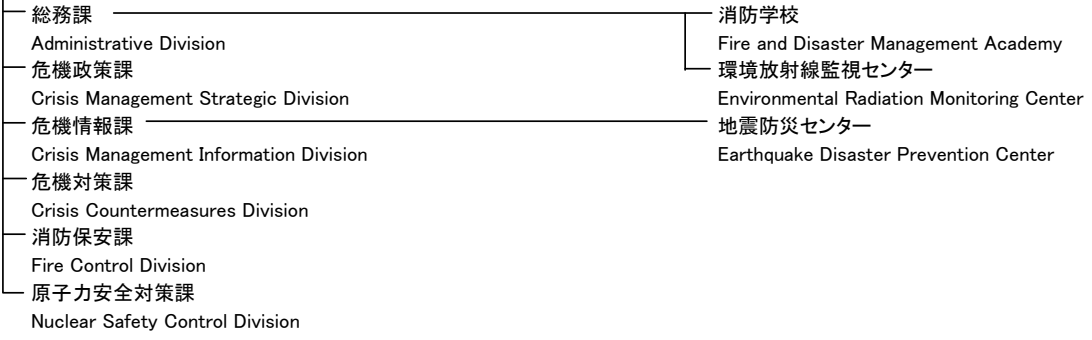
“ふじのくに大使館”（東京事務所）

Tokyo Branch Office(Fujinokuni Embassy)

“ふじのくに領事館”（大阪事務所）

Osaka Branch Office(Fujinokuni Consulate)

危機管理部
Crisis Management Department



經營管理部
Management Department

總務局

- Administrative Bureau
 - 總務課
Administrative Division
 - 法務文書課
Regulation and Archives Division

財務事務所 Taxation Office

行政經營局

- Administrative Management Bureau
 - 行政經營課
Administrative Management Division
 - 人事課
Personnel Administrative Division
 - 福利厚生課
Welfare Division
 - 健康指導課
Health Guidance Division

財務局

- Finance Bureau
 - 稅務課
Taxation Division
 - 資產經營課
Asset Management Division

地域振興局

- Regional Development Bureau
 - 地域振興課
Regional Development Division
 - 市町行財政課
Municipal Administration and Finance Division

地域局
Regional Management Center

ICT推進局

- Information and Communication Technology Promotion Bureau
 - ICT政策課
Information and Communication Technology Policy Division
 - 電子県庁課
Information Management Division
 - 統計利用課
Statistics Usage Division
 - 統計調査課
Statistical Research Division

くらし・環境部
Community and Environmental Affairs Department

政策管理局

Administrative Bureau

総務課

Community and Environmental Affairs Administrative Division

経理課

Community and Environmental Affairs Financial Division

企画政策課

Community and Environmental Affairs Policy Planning Division

県民生活局

Citizen Affairs Bureau

県民生活課

Citizen Affairs Division

くらし交通安全課

Traffic Safety Division

男女共同参画課

Gender Equality Division

多文化共生課

Multicultural Affairs Division

旅券室

Passport Office

県民生活センター

Citizen Service Center

交通事故相談所

Traffic Accident Consultation Office

建築住宅局

Architecture and Housing Bureau

住まいづくり課

Housing Division

建築安全推進課

Architecture Division

公営住宅課

Public Housing Division

環境局

Environmental Protection Bureau

環境政策課

Environmental Policy Division

環境ふれあい課

Forest Resources Division

自然保護課

Wildlife Conservation Division

廃棄物リサイクル課

Waste Control and Recycling Division

生活環境課

Living Environment Division

水利用課

Water Resources Division

環境衛生科学研究所

Environment and Hygiene Institute

スポーツ・文化観光部
Sports, Culture and Tourism Department

政策管理局

Administrative Bureau

総務課

Sports, Culture and Tourism Administrative Division

経理課

Sports, Culture and Tourism Financial Division

企画政策課

Sports, Culture and Tourism Policy Planning Division

スポーツ局

Sports Bureau

スポーツ政策課

Sports Policy Division

スポーツ振興課

Sports Promotion Division

オリンピック・パラリンピック推進課

Olympics and Paralympics Promotion Division

オリンピック・パラリンピック調整室

Olympics and Paralympics Management Division

文化局

Culture Bureau

文化政策課

Cultural Affairs Division

文化財課

Cultural Properties Division

富士山世界遺産課

Fujisan World Heritage Division

県立美術館

Shizuoka Prefectural Museum of Art

ふじのくに地球環境史ミュージアム

Museum of Natural and Environmental History

富士山世界遺産センター

Mt. Fuji World Heritage Centre

埋蔵文化財センター

Shizuoka Prefectural Archaeological Center

文化プログラム推進委員会事務局

Cultural Program Promotion Committee Secretariat

総合教育局

Comprehensive Education Bureau

総合教育課

Comprehensive Education Division

大学課

University Affairs Division

私学振興課

Private School Affairs Promotion Division

観光交流局

Tourism and Exchange Bureau

観光政策課

Tourism Policy Division

観光振興課

Tourism Promotion Division

空港振興局

Airport Promotion Bureau

空港管理課

Airport Administrative Division

空港調整室

Airport Management Division

空港振興課

Airport Promotion Division

健康福祉部
Health and Welfare Department

政策管理局

Administrative Bureau

総務課

Health and Welfare Administrative Division

経理課

Health and Welfare Financial Division

健康福祉政策課

Health and Welfare Policy Division

健康福祉センター

Public Health and Welfare Center

保健所

Public Health Center

福祉長寿局

Welfare and Longevity Bureau

地域福祉課

Regional Welfare Division

長寿政策課

Aging Policy Division

介護保険課

Nursing Care Insurance Division

福祉指導課

Welfare Guidance Division

こども未来局

Parenting and Child Support Bureau

こども未来課

Parenting Support Division

こども家庭課

Child Support Division

児童相談所

Child Support Center

女性相談センター

Women's Support Center

吉原林間学校

Yoshiwara Rehabilitation Center

三方原学園

Mikatabara Juvenile Correctional School

障害者支援局

Disability Services Bureau

障害者政策課

Disability Services Division

障害福祉課

Disability Care Division

身体障害者更生相談所

Rehabilitation and Consultation Center for Physical Disabilities

知的障害者更生相談所

Rehabilitation and Consultation Center for Cognitive Disabilities

発達障害者支援センター

Support Center for Developmental Disabilities

精神保健福祉センター

Mental Health and Welfare Center

磐田学園

Iwata Rehabilitation Center

医療局

Medical Services Bureau

医療政策課

Medical Policy Division

地域医療課

Community Medicine Division

疾病対策課

Disease Control Division

看護専門学校

Nursing School

健康局

Health Bureau

健康増進課

Health Promotion Division

国民健康保険課

National Health Insurance Division

生活衛生局

Environmental Hygiene Bureau

衛生課

Environmental Health and Food Hygiene Division

薬事課

Pharmaceutical Affairs Division

食肉衛生検査所

Meat Inspection Center

動物管理指導センター

Pet Owners' Guidance Center

経済産業部
Economy and Industry Department

政策管理局

Administrative Bureau

総務課

Economy and Industry Administrative Division

経理課

Economy and Industry Financial Division

産業政策課

Industrial Policy Division

組合検査課

Union Inspection Division

農林事務所

Agriculture and Forestry Office

産業革新局

Industrial Innovation Bureau

産業イノベーション推進課

Industrial Innovation Promotion Division

新産業集積課

Research and Development Management Division

マーケティング課

Marketing Division

エネルギー政策課

Energy Policy Division

就業支援局

Labor and Workforce Development Bureau

労働雇用政策課

Labor and Employment Policy Division

職業能力開発課

Workforce Development Division

技術専門校

Vocational Training Center

あしたか職業訓練校

Ashitaka Vocational Training Center

中小企業労働相談所

Small to Medium Sized Business Consultation Center

商工業局

Commerce and Industry Bureau

商工振興課

Commerce and Industry Promotion Division

企業立地推進課

Business Development Division

商工金融課

Commerce and Industry Financial Division

経営支援課

Management Support Division

地域産業課

Regional Industry Division

工業技術研究所

Industrial Research Institute of Shizuoka Prefecture

計量検定所

Meter Inspection Center

農業局

Agriculture Bureau

農業戦略課

Agricultural Strategy Division

農業ビジネス課

Agricultural Business Division

地域農業課

Regional Agriculture Division

お茶振興課

Tea Industry Development Division

農芸振興課

Agriculture and Horticulture Development Division

畜産振興課

Stock Farming Development Division

農林技術研究所

Shizuoka Prefectural Research Institute of Agriculture and Forestry

畜産技術研究所

Shizuoka Prefectural Research Institute of Animal Industry

畜産経営環境技術センター

Farm Management and Environmental Technology Center for Swine and Poultry

農林大学校

Agriculture and Forestry College

ふじのくに茶の都ミュージアム

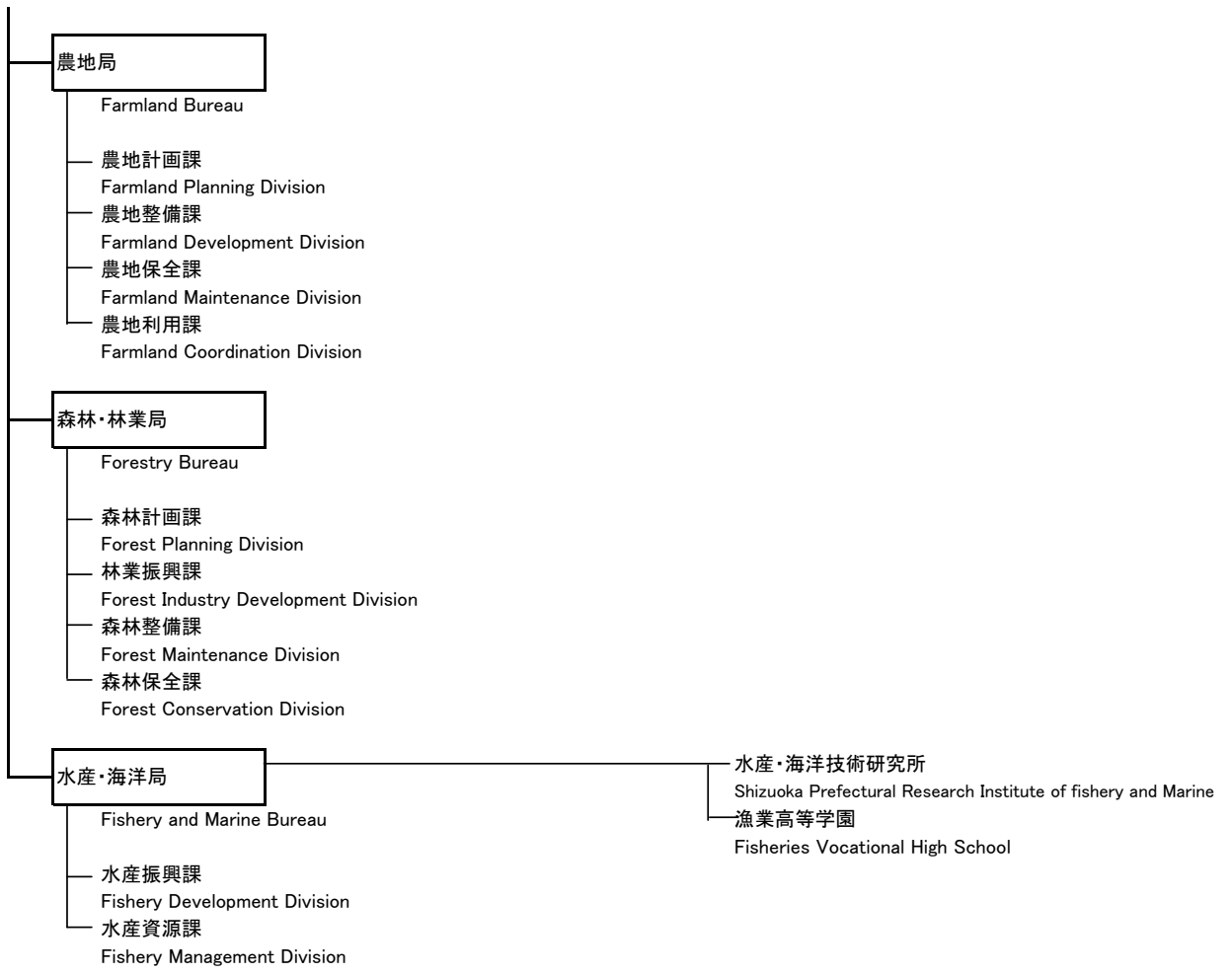
Tea Museum

病害虫防除所

Disease and Pest Control Center

家畜保健衛生所

Livestock Disease Diagnostic Center



交通基盤部
Transportation Infrastructure Department

政策管理局

- Administrative Bureau
 - 総務課
Transportation Infrastructure Administrative Division
 - 経理課
Transportation Infrastructure Financial Division
 - 建設政策課
Construction Policy Division

土木事務所
Public Works Office

建設支援局

- Construction Support Bureau
 - 建設業課
Construction Industry Division
 - 公共用地課
Land Acquisition Division
 - 建設技術企画課
Construction Technology Planning Division
 - 建設技術監理センター
Construction Technology Managing Center
 - 工事検査課
Construction Inspection Division
 - 営繕企画課
Prefectural Buildings Administrative Division
 - 営繕工事課
Prefectural Buildings Construction Division
 - 設備課
Prefectural Facilities Construction Division

道路局

- Roads Bureau
 - 道路企画課
Road Planning Division
 - 道路整備課
Road Construction Division
 - 道路保全課
Road Maintenance Division

河川砂防局

- Flood and Landslide Control Bureau
 - 河川砂防管理課
Flood Control Administrative Division
 - 河川企画課
River Management Division
 - 河川海岸整備課
River and Coast Control Division
 - 土木防災課
Public Works Control Division
 - 砂防課
Landslide Control Division

港湾局

- Ports and Harbors Bureau
 - 港湾企画課
Port and Harbor Strategic Division
 - 港湾振興課
Port and Harbor Promotion Division
 - 港湾整備課
Port and Harbor Control Division
 - 漁港整備課
Fishing Port Control Division

田子の浦港管理事務所
Tagonoura Port Authority
清水港管理局
Shimizu Port Authority
焼津漁港管理事務所
Yaizu Fishing Port Authority
御前崎港管理事務所
Omaezaki Port Authority

都市局

Urban Planning Bureau

都市計画課

Urban Planning Division

地域交通課

Regional Transportation Division

土地対策課

Land Management Division

景観まちづくり課

Urban Landscape Division

街路整備課

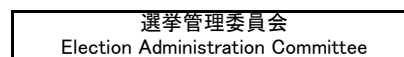
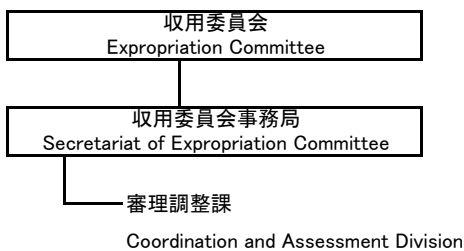
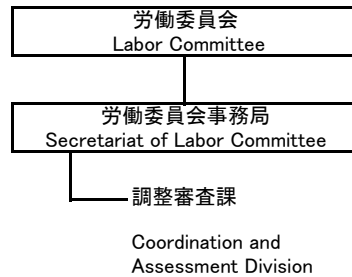
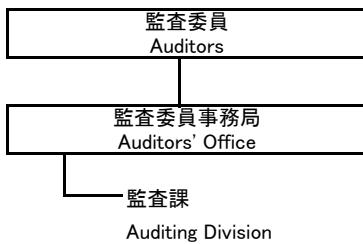
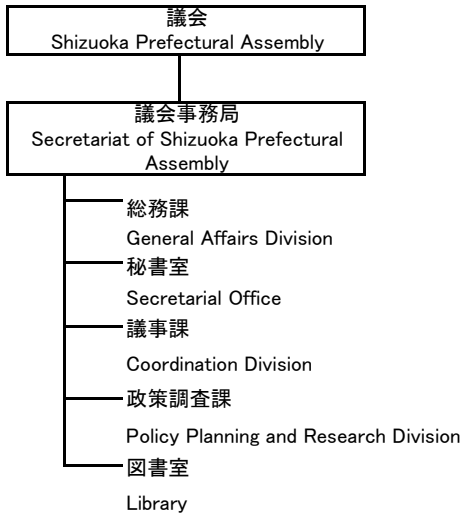
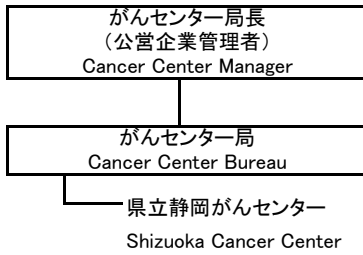
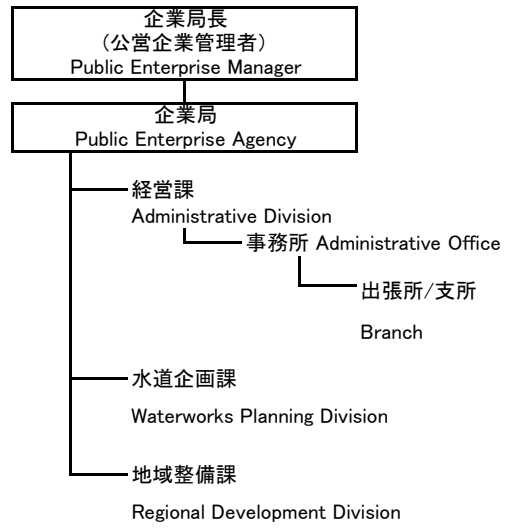
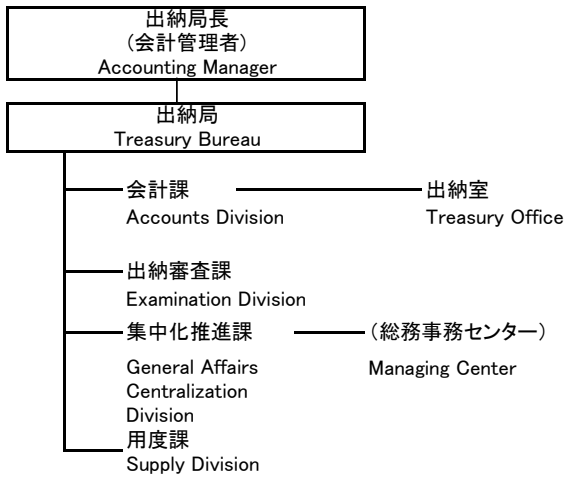
Road Improvement Division

生活排水課

Sewage Control Division

公園緑地課

Parks and Greenery Division



教育委員会
Board of Education

教育委員会事務局
Board of Education Administration

教育機関
Educational Facilities

- 教育総務課
General Affairs Division
- 教育政策課
Education Policy Division
- 財務課
Financial Affairs Division
- 教育厚生課
Education Welfare Division
- 教育施設課
Education Facility Division
- 義務教育課
Compulsory Education Division
- 高校教育課
High School Education Division
- 特別支援教育課
Special Education Division
- 健康体育課
Health and Physical Education Division
- 社会教育課
Social Education Division
- 静東教育事務所
Seito Local Education Office
- 静西教育事務所
Seisei Local Education Office

- 中央図書館
Prefectural Central Library
- 総合教育センター
Comprehensive Education Center
- 焼津青少年の家
Yaizu Youth and Children's Center
- 観音山少年自然の家
Kan-non-yama Children's Nature Center
- 富士山麓山の村
Mt. Fuji Students' Training Center
- 県立学校
Prefectural Schools